



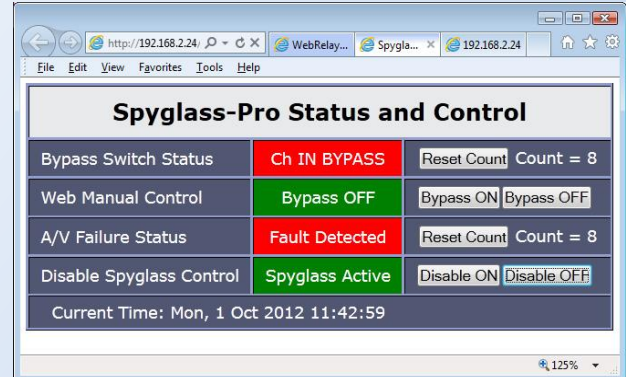
Spyglass Pro

TV Channel Failure

Detection with switching



Spyglass-Pro Dual, TV Channel Failure Detection with web status and control, For redundant videosever output failover.



- ❖ TV Channel Failure Detection
- ❖ TV Failure Event Logging
- ❖ Redundant Videosever Failover Version
- ❖ Bypass Switching
- ❖ Analog, SD-SDI, HD-SDI Versions
- ❖ Adjustable Sensitivity Levels
- ❖ Adjustable Switch Time Delays
- ❖ Email Alarm Reporting
- ❖ Web browser status and control
- ❖ Time scheduled disable
- ❖ Optional Telephone Dialer
- ❖ Customizable Modular Design

Spyglass analyzes your channel output signals looking for signs of failure. It checks your channel for picture motion, audio presence, video presence, and sync level. If it detects one or more failures, that exceed predetermined levels, an alert signal is dispatched and your channel is bypassed to an alternate feed.

Spyglass is specifically designed to protect from false triggering. Preprogrammed algorithms are used to identify the type of failure and adjustable preset timers help prevent false triggering.

In addition to snow, blue, or black screens Spyglass can detect a frozen frame from a MPEG decoder or frame synchronizer.

The Spyglass system can be configured to bypass to your system bulletin board, or backup channel feed. Optional outputs are available for sounding alarms or to interface to your existing automation system.

The system can be purchased with or without bypass switching. The Spyglass detection, control, and switching modules can be housed in a one-channel or four-channel rack-mount frame.

An optional telephone alarm dialer, that calls multiple telephone numbers and plays back pre-recorded messages, can be purchased. An optional email device is also available.

The Spyglass Pro version includes web browser status, control and logging capability. Spyglass product family has 4 basic product types.

Single Spyglass Analog or Digital

Single Spyglass-Pro Analog or Digital

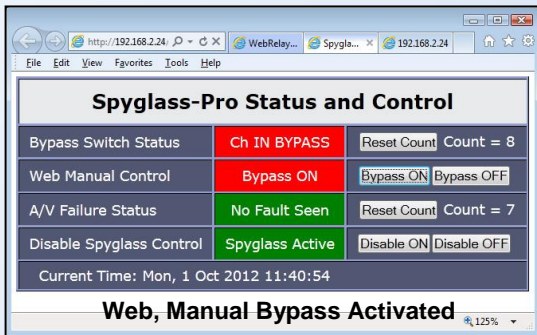
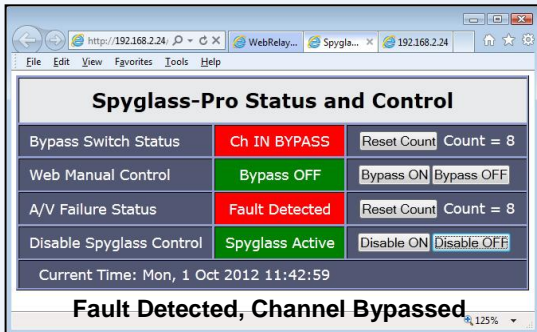
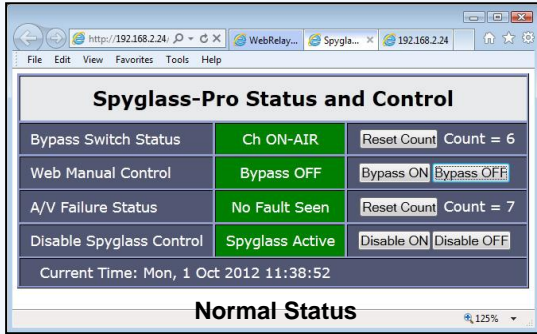
Dual Spyglass Analog or Digital

Dual Spyglass-Pro Analog or Digital

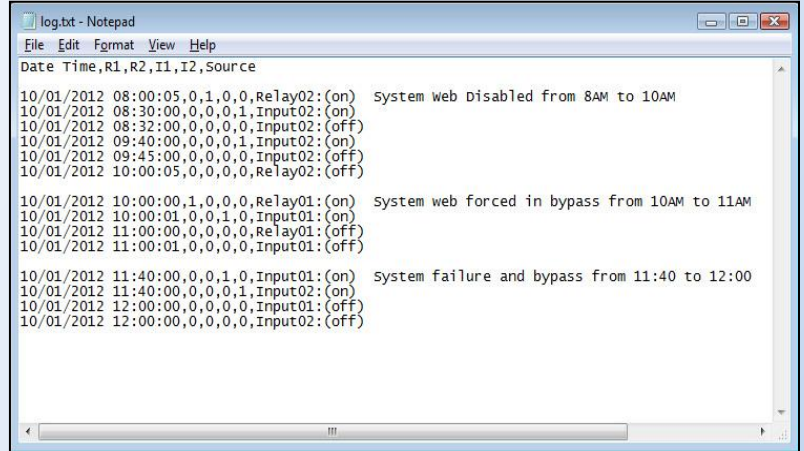


Media Control Systems
*Television Automation
Specialists*

Spyglass-Pro Web Status, Control, Email, Logging



Spyglass-Pro Text Log Report, accessed via web browser



Spyglass Product Pricing

- 1 Ch Spyglass.....\$1,400
(Analog audio and video)
- 1 Ch Dual Detector Spyglass\$1,950
(for redundant video servers, analog A/V)
- 1 Ch Spyglass HD/SD-SDI.....\$2,645
(embedded digital audio)
- 1 Ch HD/SD-SDI Dual Spyglass.....\$2,995
(for redundant video servers, embedded audio)
- Viking Telephone Dialer.....\$500
- ESTick Email Appliance.....\$150

Spyglass-Pro Product Pricing *(Web status, control, email, and logging)*

- 1 Ch Spyglass-Pro\$1,975
(Analog audio and video)
- 1 Ch Spyglass-Pro Dual Detector\$2,525
(for redundant video servers, analog A/V)
- 1 Ch Spyglass-Pro HD.....\$3,225
(embedded digital audio)
- 1Ch Spyglass-Pro HD Dual.....\$3,800
(embedded digital audio)

Backup Analog Video Source

- Domino** Media Player\$750

Prices are subject to change without notice.
Publication Date: December 2012

Media Control Systems
1050 Pioneer Way, Suite Q
El Cajon, CA 92020
Phone: 619-599-1050
Fax: 619-599-1051

www.mediacontrolsystems.com