



Domino Pro

Solid-State Memory

Ad / Program Insertion System



Television Automation
Specialists



- ❖ DTMF or Manual Start Mode
- ❖ Real-Time Start Mode
- ❖ Drag and Drop PC Scheduling Software
- ❖ Satellite Network DTMF Cue Tone Decoder
- ❖ Vertical-Interval Solid-State A/V Switching
- ❖ Satellite Network Relay Bypass A/V Switching
- ❖ Fail-Safe Return-to-Network Timer
- ❖ Web browser status monitoring
- ❖ Date and Time, Ad File Playback Logging
- ❖ SD Memory, USB file transfer
- ❖ MPEG-1,2,4; WMV9; JPEG; File Playback
- ❖ Composite Video; Optional HD/SD-SDI
- ❖ Unbalanced Stereo Audio
- ❖ Rack Mounting Modular Design
- ❖ Front Panel or LAN Manual Start
- ❖ Optional Time Base Corrector

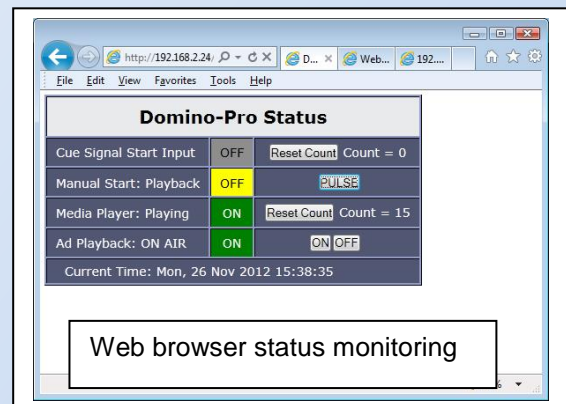
Domino Pro is a television advertisement and program insertion system. It is low-cost and simple to operate. It is designed for smaller cable TV and broadcast television facilities that are looking for an entry level solution, for inserting commercials or programming into a primary retransmitted network feed.

Files placed in internal SD memory via USB drive, are played back according to a playlist schedule. Playlist schedules, "playlist.txt" files, are created for playing files on weekly, day part, or day and time basis. Files are loaded using a menu from the video monitor output or by a command.txt file placed on the USB drive. Domino Pro PC software is provided to create the playlist.

In the cue start mode, Domino is user configurable to play 1, 2, 3, 4, 5, 6, or 7 files with each start command. Network preroll delays can be set from 1 to 15 seconds.

A user adjustable fail safe timer is provided to automatically return the A/V switch to network, in case of media player failure. An audio/video relay bypass is provided to keep the network switched to the output when the frame is powered off.

A built in web controller allows for status monitoring, event logging and manual start via web.



Media Control Systems



**Television Automation
Specialists**

Modular Design

A Domino system includes a DTMF decoder module, audio-video switch module, player control module, internal web controller and A/V Media Player. The modular design provides in-field replaceable components to minimize down time in case of equipment failure. The modular construction also allows for custom modifications for unique applications.

Solid State Storage Media

Domino uses reliable SD flash memory for media storage. 500 DVD quality 30-second ad files can be stored on the provided 16-Gig SD Card. Up to 32-Gig of SD memory can be purchased.

Real-Time or Cue Start Modes

Scheduled media can be started on a time window cue or real-time start basis. A dip switch is provided on the controller card to select the mode of operation.

Setup

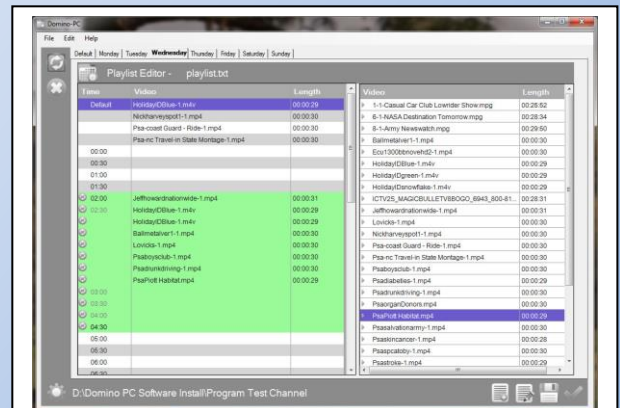
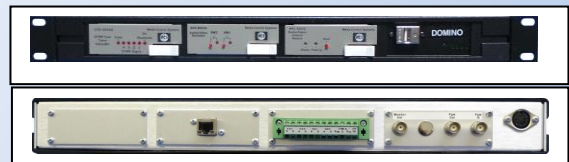
Preroll delays, and the number of files per start are set using DIP switches. The return-to-network fail-safe timer is set using a web browser. Manual starts can be made from a front panel push button or via web browser.

Domino PC Software

Scheduling software is provided to create weekly playlists. The software lists available media files in a right hand column where their names can be drag into a daily time grid on the left.

Playlists can be created for any number of channels. Helpful features such as copy one day to another, copy and paste, and search and replace are provided.

Time blocks can be created where a list of files can be played on a repeat bases or set up to play only once. Default files can be scheduled that play when nothing is scheduled for a particular day and time. You can have weekly and or daily default files.



Domino-Pro PC Scheduling Software

Media Control Systems

1050 Pioneer Way, Suite Q
El Cajon, CA 92020
Phone: 619-599-1050
Fax: 619-599-1051

www.mediacontrolsystems.com

Domino Pro-100A

Analog System without TBC.....\$2,750

Ensemble BrightEye-5 TBC.....\$900
(Installed into Domino Pro Chassis)

Prices are subject to change without notice.
Publication Date, March 03, 2014

